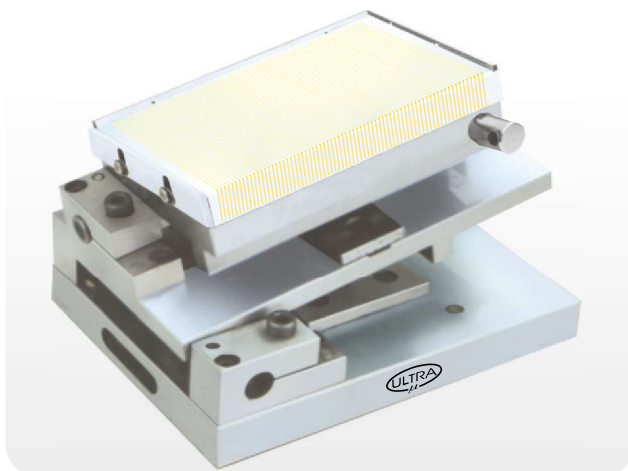


26 SERIES **UL - 404**

"ULTRA" BRAND MAGNETIC COMPOUND SINE-TABLE (IS : 5939- 1970)

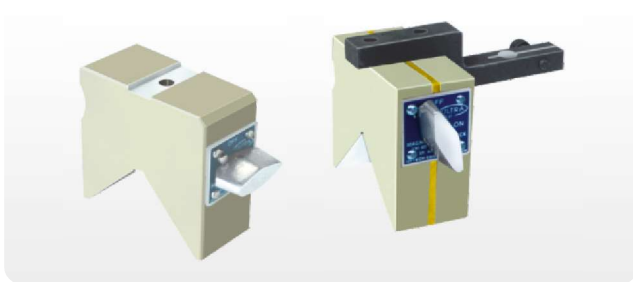


- **Compound Angle facility.**
- Used for Precision measurement, setting of angles & Light machining.
- Accuracy for Square ness, Flatness & Parallelism within 0.010mm upto 200L & 0.015mm upto 450L.
- Angle can be set within ± 5 seconds.
- Centre Distance between rollers is within 0.005mm.
- Made from high quality alloy steel
- Hardness 60 ± 2 Rc & Tempered.
- **Magnetic Table for job holding.**
- Firm hinged clamp to reduce possibility of distortion.
- Magnetic Chuck with fine Pitch. (1.5mm)

| Sr. No. | Cat No. | Size (mm) | Bottom C.D. (mm) | Top C.D. (mm) | Inclination |
|---------|----------|---------------|------------------|---------------|-------------|
| 1. | UL 40401 | 150 L x 120 W | 100 | 70 | 0 - 45° |
| 2. | UL 40402 | 250 L x 150 W | 150 | 100 | 0 - 45° |
| 3. | UL 40403 | 300 L x 150 W | 200 | 100 | 0 - 45° |
| 4. | UL 40404 | 450 L x 150 W | 300 | 100 | 0 - 45° |
| 5. | UL 40405 | 450 L x 200 W | 300 | 70 | 0 - 45° |

27 SERIES **UL - 505**

"ULTRA" BRAND MAGNETIC TOOL SETTING GAUGE



- Used with boring bar for presetting of the cutting tool.
- Change in the setting of the tool measures variation in bore dimension.
- Suitable clamp is provided for holding dial indicator (for UL - 50504 & UL - 50505)
- Powerful magnet with ON-OFF facility.
- "V" is hardened & ground within 5 microns.
- The included angle of V is 90°.
- Hardness 52 - 56 Rc.
- Also manufactured as per customer's requirement.

| Sr. No. | Cat No. | Size (mm) | Slot (mm) | Range (mm) |
|---------|----------|---------------------|-----------|---------------|
| 1. | UL-50501 | 72 L x 68 H x 35 T | 14 x 2 | Ø 25 - Ø 70 |
| 2. | UL-50502 | 76 L x 75 H x 35 T | 14 x 2 | Ø 35 - Ø 90 |
| 3. | UL-50503 | 80 L x 75 H x 40 T | 14 x 2 | Ø 40 - Ø 105 |
| 4. | UL-50504 | 100 L x 85 H x 40 T | 14 x 2 | Ø 40 - Ø 125 |
| 5. | UL-50505 | 120 L x 90 H x 40 T | 14 x 2 | Ø 110 - Ø 180 |

28 SERIES **UL - 505**

"ULTRA" BRAND MAGNETIC TOOL SETTING GAUGE



- Used with boring bar for presetting of cutting tool.
- Change in the setting of the tool measures variation in bore dimension.
- Suitable clamp is provided for holding dial indicator.
- Powerful magnet with ON-OFF facility.
- "V" is hardened & ground within 5 microns.
- The included angle of V is 120°.
- Hardness 52 - 56 Rc.
- Also manufactured as per customer's requirement.

| Sr. No. | Cat No. | Base Size (mm) | Range (mm) |
|---------|----------|----------------------|--------------|
| 1. | UL 50506 | 60 L x 60 H x 30 T | Ø 10 - Ø 50 |
| 2. | UL 50507 | 80 L x 80 H x 30 T | Ø 10 - Ø 90 |
| 3. | UL 50508 | 100 L x 100 H x 35 T | Ø 10 - Ø 110 |